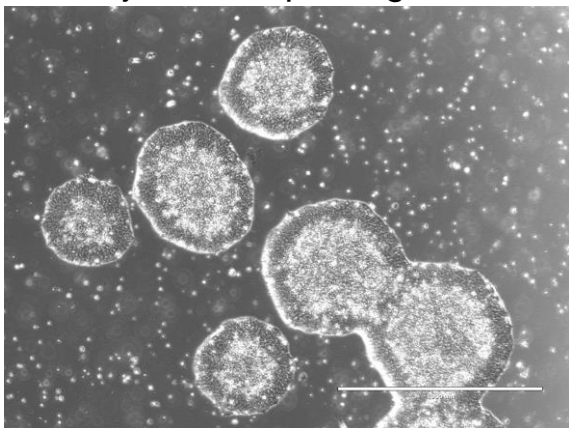
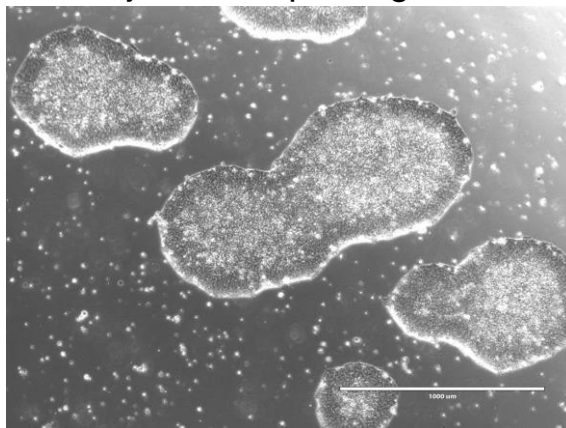


【 CiRA-j-1454 】 Morphology of iPSC colonies

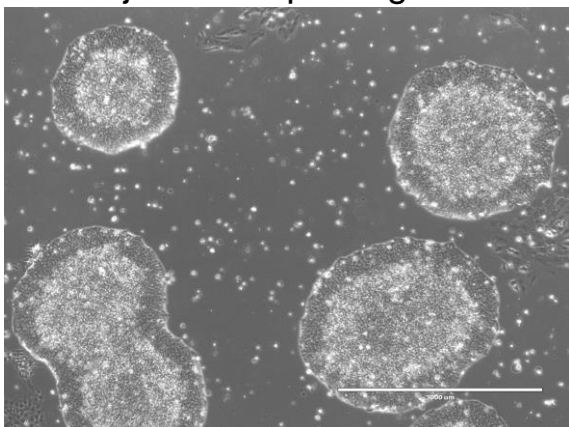
CiRA-j-1454-A: passage-3



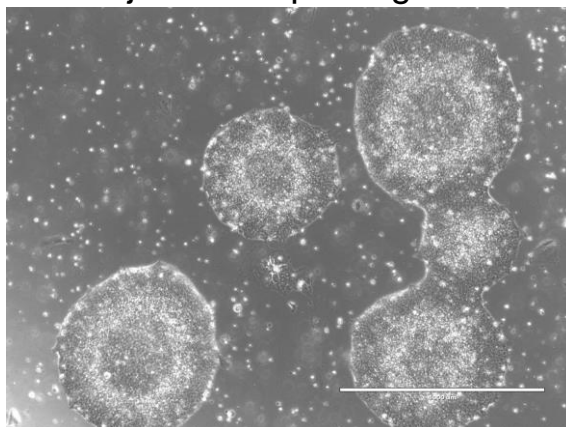
CiRA-j-1454-B: passage-3



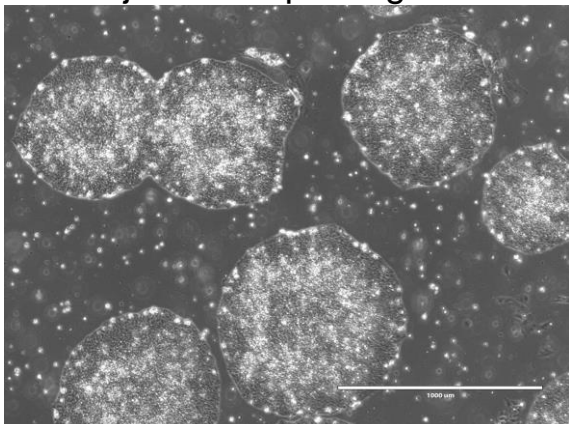
CiRA-j-1454-C: passage-3



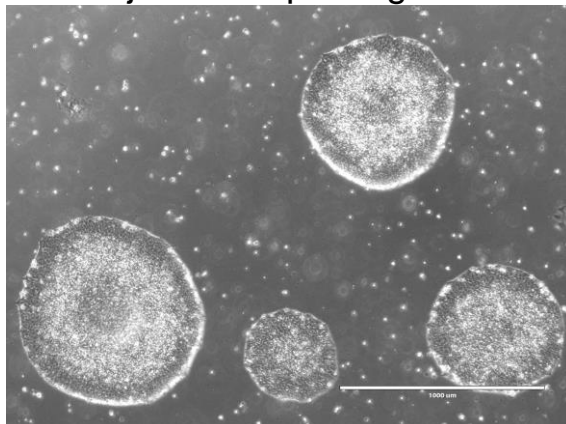
CiRA-j-1454-D: passage-3



CiRA-j-1454-E: passage-3



CiRA-j-1454-F: passage-3



(All images were captured at 4x magnification)